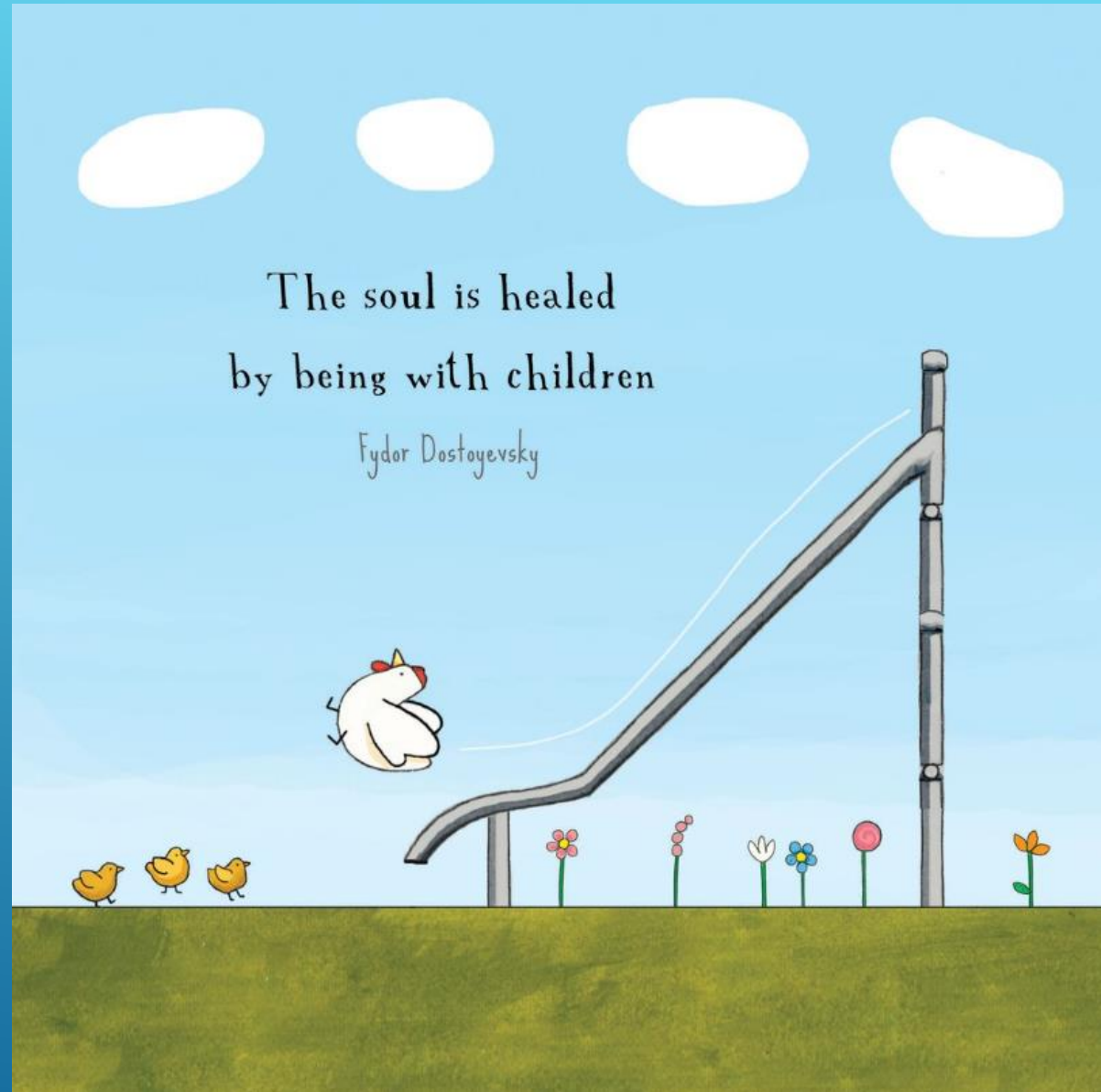




Churchlands
Primary School

DIRECTION AND FOCUS 2022/2023

WELCOME



What has happened in 2022!

Celebration – Awarded the ‘Recognition of Academic Excellence 2021’ by the Director General of Education and Minister of Education.

- Continued supporting whole school focus and direction
 - Plan, Teach, Assess Model
 - Teaching and learning Framework
 - Curriculum Leadership Framework
- Focus on Quality Teaching – Impact on student learning – 3 way effective feedback
- Began a Reading Audit – Teacher survey on reading practices, reviewed outcomes and data to align with areas of celebration and future focus.
- Further embedded our Positive Behaviour in Support (PBS) framework strategic plan.
- Implemented PLD spelling program to support identified areas of need. Supports the promotion of literacy development - PLD's method is derived from the disciplines of speech pathology, occupational therapy and education. As an Australian publisher and professional development provider, PLD advocates that literacy and learning outcomes are maximised for children when their **Literacy, Oral Language** and **Movement & Motor** skills are targeted.

Fully Implemented

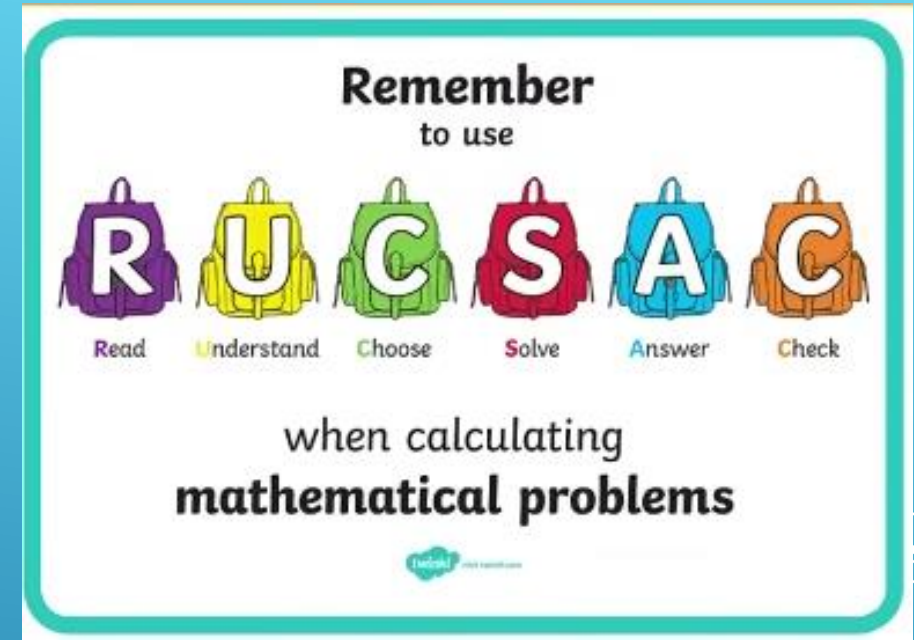
- **Visible Learning** environment (*John Hattie - helping educators understand, measure, and evaluate the impact they can have on student growth and achievement.*)
- **Talk for writing** (Junior years)
- **Seven Steps for writing** (Middle/Upper)
- Maths RUCSAC method for problem solving

Assessments

- Brightpath English
- Brightpath Maths
- PAT assessment – English/Maths
- Kindy KAT assessment tool
- On entry

Early intervention/support programs

- EAL/D program
- Mini Lit
- K/P/1 – holistic approach



Prerequisites
for Successful
Students

Enablers of
Successful
Students

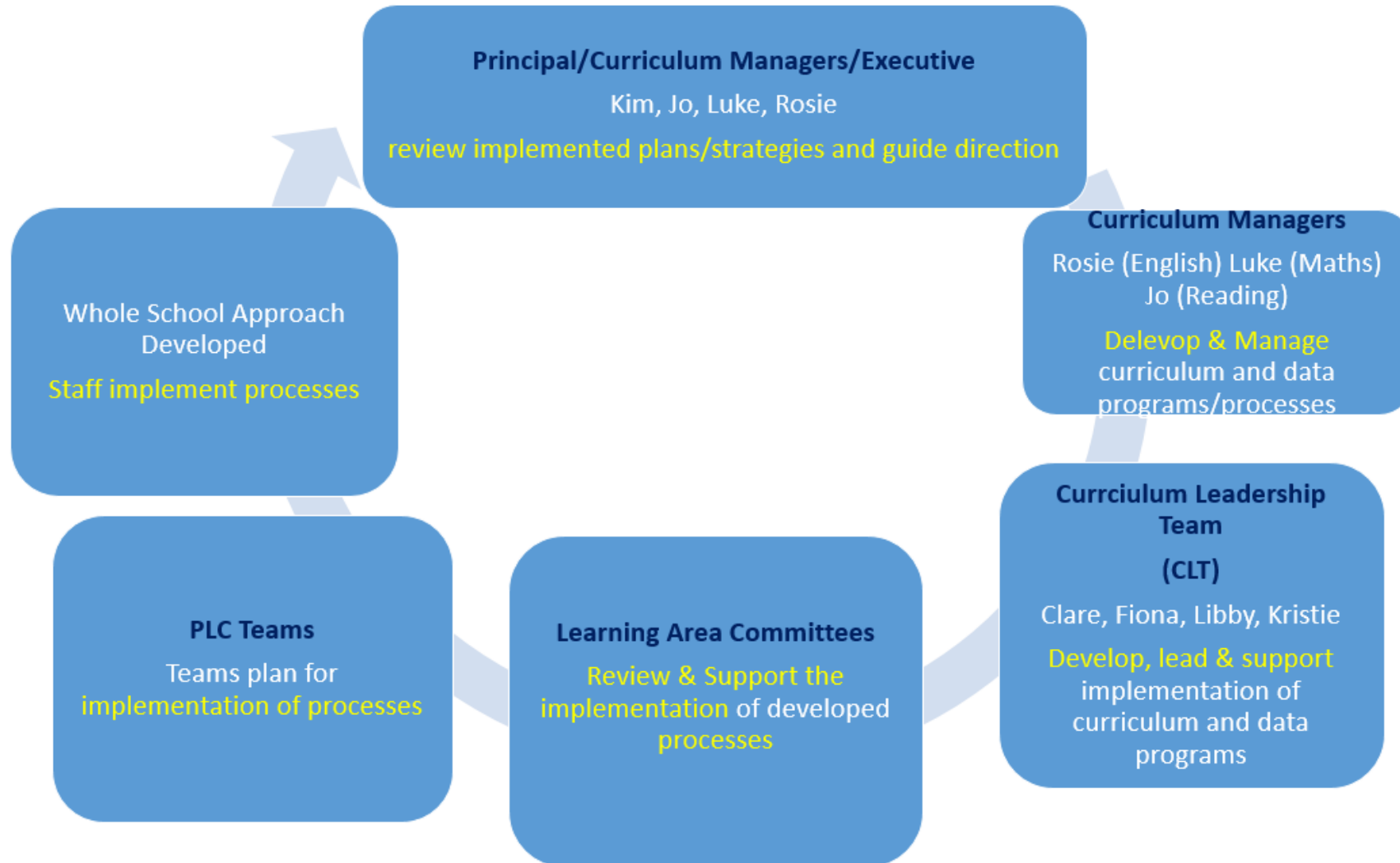


School
Review



School
Reporting

Curriculum Leadership Framework 2022



CPS Teaching and Learning Framework

Aim, Activate, Achieve, Assess

AIM	<i>Visible Learning Learning Intentions</i>	<ul style="list-style-type: none"> • Establish Learning Goals / Aim of the lesson. • Write them on the board or display on screen. • Share lesson success criteria. By the end of the lesson you will be able to / will know / have done/ WALT WILF • Share an example of success. A work sample, a piece of work.
ACTIVATE	Learning	<ul style="list-style-type: none"> • The Hook – stimulate interest • Prior knowledge/previous learning • Connect to real world/Relevant/problem solve
ACHIEVE	<p>I do</p> <p>We do</p> <p>You do</p>	<ul style="list-style-type: none"> ○ <u>Understanding</u> through EXPLICIT TEACHING ○ <u>Fluency</u> through TEACH, PRACTICE, APPLY • Questioning techniques, brainstorm, identify keywords. • Thinking – developing creative and critical thinkers • Teacher input – teach the concept • Scaffold and model • Question • Use wait time • Check for understanding • Higher level questions • Adjustments made if needed • Range of tasks • Cooperative learning, collaborative tasks • Experiment / hands on • Differentiated for ability • Use of ICT – to create, communicate, collaborate • Teacher support / monitor • Presentation to class • Self / peer assessment
ASSESS	<i>review</i>	<ul style="list-style-type: none"> • Reinforce key points • Questioning of learning • Online quiz/ feedback • Refer back to aims/objectives • Evaluate student progress • Provide effective feedback to students • Self/peer assessment to inform gaps • Student/teacher feedback • Use feedback/data to inform teacher forward planning

2023

- Development of new Business Plan 2023 – 2025
 - In development – Challenge program supporting every child to challenge their thinking and support academic growth.
 - Maths – further develop problem solving and creative and critical thinking.
 - Continue to develop, embed and grow all focus areas both academic and social emotional.
 - Implementation of the Departments initiatives
 - Quality Teaching Strategy – Teaching of Impact
 - Phonics Initiative – completion of a phonics assessment.
 - Preparation for our next Public School Review in Semester 2
- 